

# MAKE YOUR BACKYARD EXCEPTIONAL FROM EVERY ANGLE



**BULL**   
COMPLETE OUTDOOR KITCHEN & GRILL SOLUTIONS



**CUTTING-EDGE  
TECHNOLOGY,  
EXCEPTIONAL  
QUALITY, AND  
UNMATCHED  
DESIGNS.**

---



## CONTENTS

- 2 ABOUT BULL
- 4 DURAKITCHENS  
HDPE COLLECTION
- 5 DURACABINETS  
HDPE COLLECTION
- 6 BULL OUTDOOR  
KITCHEN COLLECTION
- 8 BULL SIMPLEBUILD  
COLLECTION
- 9 RELIABULL HEAT  
TECHNOLOGY
- 10 BULL CORE SERIES
- 14 BULL GRILL HEAD  
AND CART COLLECTION
- 16 BULL PIZZA OVEN  
AND FIRE FEATURES
- 20 BULL COMPONENTS



# MANUFACTURING THE HIGHEST QUALITY PREMIUM BBQ'S SINCE 1992

## FROM A SINGLE GARAGE TO THOUSANDS OF BACKYARDS

For most people, tinkering with and testing an open flame grill in a garage is not a good idea. However, Mark Nureddine is not most people. His inventive experimentation with a grill in a closed environment was the genesis of a company that would grow into one of the leading manufacturers of outdoor kitchens in the world.

In 1992, Mark Nureddine and his partner began refining their idea for a business and creating the deliverable “Outdoor Kitchen Concept” out of Nureddine’s garage. Today, over 30 years later, Bull Outdoor Products Inc. has grown immensely and reached widespread prominence in the industry.



Under Nureddine’s direction and leadership for the past 30 years, **Bull Outdoor Products has emerged to offer the finest premium grills, outdoor kitchens, and components to over 900 dealers and distributors throughout North America, as well as 15 countries around the world.** From a single garage to countless backyards, Bull Outdoor Products are the gold standard when it comes to unbelievable outdoor cooking.

## OUR TEAM

Our team of passionate and driven individuals are dedicated to guiding our customers through design and purchasing while expanding their backyard experience through a vast library of recipes, tips, and techniques from world champion chefs. Our team delivers the products, power and panache for every home cook to unleash their inner Grill Master.

**THE MOST IMPORTANT INGREDIENT IN PRODUCTION OF A BULL PRODUCT IS OUR PEOPLE.**

## OUR PASSION

We are passionate about building outdoor BBQ kitchens and their quality stainless steel grills and components. Bull's Premium BBQ Grills are lauded by chefs and backyard enthusiasts throughout the world for their performance, construction, and design. Our dedication to developing the best and most complete line of outdoor kitchen equipment in the industry is fueled by ongoing research in the grill industry, utilizing engineering experts at California Polytechnic State University to create the new ReliaBull technology.



**BULL OUTDOOR PRODUCTS IS A FAMILY-OWNED COMPANY COMMITTED TO DESIGNING AND DELIVERING HIGH-PERFORMANCE, LUXURY OUTDOOR KITCHEN PRODUCTS BUILT FOR UNMATCHED DURABILITY. OUR MISSION IS TO INSPIRE CONNECTION – BRINGING FAMILIES AND FRIENDS TOGETHER OUTDOORS TO SHARE GREAT FOOD AND MEMORIES THAT LAST A LIFETIME.**

# Dura KITCHENS™

## THE DETAILS MAKE US DIFFERENT

DuraKitchens™ pairs quality USA craftsmanship with cutting edge innovation. Constructed of HDPE (High-density polyethylene), this new Outdoor Kitchen collection offers elegance with casual sophistication. The innovative materials, advanced manufacturing, and thoughtful design allow DuraBull™ to synthesize classic styling with a modern curve. Yes, the future of Outdoor Kitchens has arrived!

DuraKitchens™ features include: Angus Grill, Granite Countertop - Choice of three colors, HDPE Marine Grade 3/4" Base - Choice of three colors, and Deluxe Stainless Steel Refrigerator 5.0 cu. ft.



### CHARLESTON

#### OUTDOOR KITCHEN - 10ft.

The Charleston Outdoor Kitchen is a wonderful addition to any smaller backyard or patio. You'll have everything you need right in front of you, including hot BBQ right off the grill and an ice-cold drink from the fridge.

##### Standard Features

- Angus 4-Burner Stainless Steel Grill 75,000 BTUs
- Granite Countertop – Choice of 3 colors
- HDPE Marine Grade 3/4" Base – Choice of 3 colors
- Deluxe Stainless Steel Refrigerator 5.0 cu. ft.
- Triple Drawer Storage

### MYRTLE BEACH

#### OUTDOOR KITCHEN - 8ft.

The Myrtle Beach Outdoor Kitchen is a wonderful addition to any smaller backyard or patio. You'll have everything you need right in front of you, including hot BBQ right off the grill and an ice-cold drink from the fridge.

##### Standard Features

- Angus 4-Burner Stainless Steel Grill 75,000 BTUs
- Granite Countertop – Choice of 3 colors
- HDPE Marine Grade 3/4" Base – Choice of 3 colors
- Deluxe Stainless Steel Refrigerator 5.0 cu. ft.
- Double Trash Drawer

# Dura CABINETS™

## 1 CHOOSE YOUR CABINET FACE STYLE & COLOR

DOVE

DUNE

BLACK JACK

CHARCOAL GREY

HEADSTONE BROWN

SYMPHONY BLUE

CLUB



MODERNA



OXFORD



REGENT



SEDONA



## 2 CHOOSE YOUR CABINET OPTIONS & KITCHEN LAYOUT

36" - Burner Grill Cabinet



Kamado Ceramic Grill Base Cabinet with Drawer



18" - Cabinet Base Dual Waste Basket with Drawer



18" - Three Drawer Base Cabinet



24" - Two Door Cabinet Base with Drawer



42" - Base with Blind Corner for Right Return



## 3 ADD COMPONENTS TO COMPLETE YOUR DREAM OUTDOOR KITCHEN



Single Slide-in Pro Side Burner with Cover



Dual Fuel Countertop Pizza Oven



24" Premium sink



Contemporary Refrigerator



**PREMIER Q**



**VERSA Q**

# THE BULL OUTDOOR KITCHEN COLLECTION

**WITH OVER 30 YEARS OF EXPERIENCE IN DEVELOPING AND MANUFACTURING OUTDOOR KITCHENS, BULL OUTDOOR PRODUCTS INC. IS THE INDUSTRY EXPERT IN BACKYARD ENTERTAINING.**

The Bull Outdoor Kitchen Collection includes many impressive standard features that will turn your dream Outdoor Kitchen into reality.

Our design experts have solutions to fit any situation and will match your needs with over 40 tile and base combinations, 18 standard features and over 90 optional upgrades.



**LITTLE Q**



**LUXURY Q**



**MASTER Q**



**BBQ OUTDOOR**



**GOURMET Q**

# PRE-BUILT, SEMI-CUSTOM OR FULLY CUSTOMIZABLE SOLUTIONS

DESIGNS TO FIT ANY SPACE

ALL KINDS OF MATERIALS

HUGE RANGE OF UPGRADES  
AND ADD-ONS AVAILABLE



**OUTDOOR KITCHEN**



**PATIO Q**



**POWER Q**

## THE SIMPLEBUILD SERIES

# YOUR DREAM OUTDOOR KITCHEN, MADE SIMPLE.

WITH A FOCUS ON QUALITY,  
INNOVATION, AND DESIGN,  
OUR OFFERINGS ENSURE  
YOU CREATE MEMORABLE  
EXPERIENCES AND ELEVATE  
YOUR OUTDOOR DINING GAME.

The SimpleBuild Series is Bull's smart outdoor kitchen kit, created so homeowners can build their own premium outdoor living without the hassle or cost of a professional installation.

Designed with modular panels that fit perfectly together quickly and granite countertops that drop neatly into place, making assembly quick and easy.



CHARCOAL TIMBER  
TOUGH

WALNUT TIMBER  
TOUGH

STEEL GREY

COLONIAL WHITE



## STYLE THAT LASTS

Choose from rich Charcoal or Walnut bases. Steel Grey Granite or Colonial White Granite countertops, built tough, designed to impress.

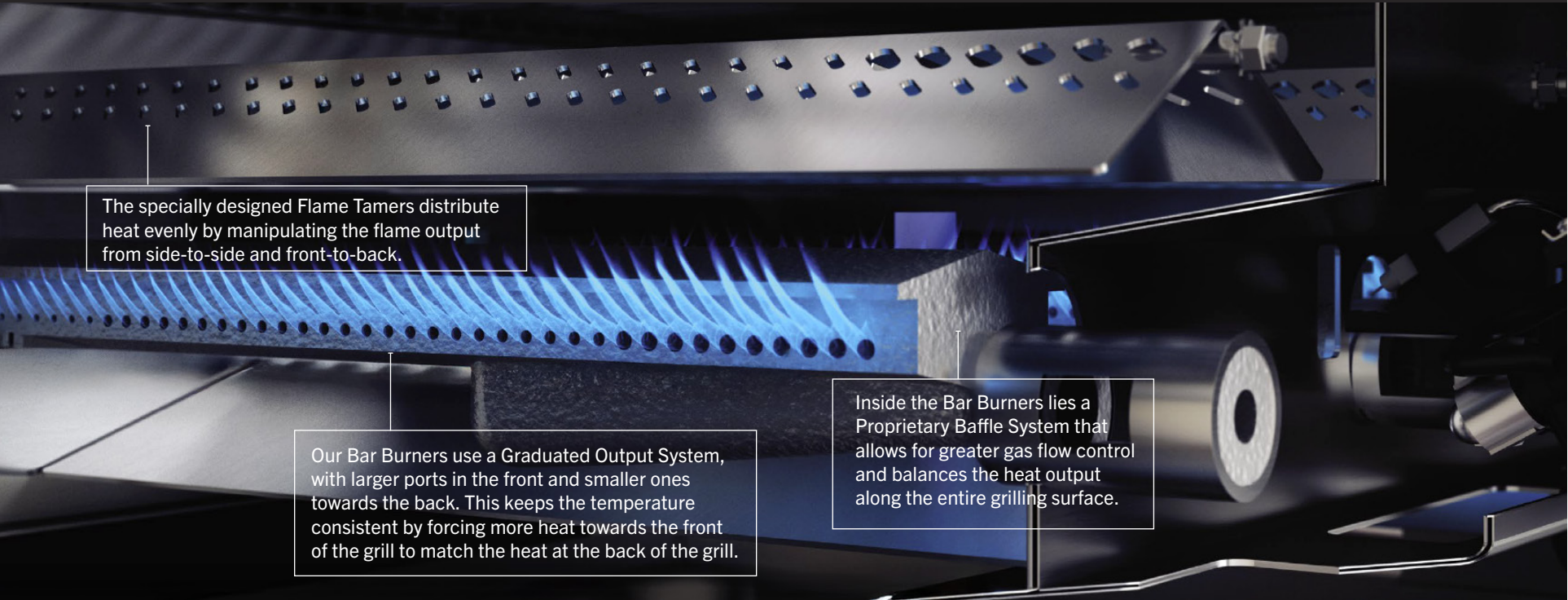
# DON'T TRUST YOUR NEXT BBQ MEAL TO A GRILL WITHOUT **RELIABULL™ HEAT TECHNOLOGY** INCLUDED IN ALL BULL GRILLS!

Developed in collaboration with Cal Poly engineering experts, our exclusive ReliaBull™ technology ensures more consistent heat distribution across the grill surface—reducing cold spots and maximizing usable cooking space.



Now in its second generation, it features:

- Improved stainless steel burners
- Even heat baffle design
- Smaller rear vents for better front-to-back heat consistency



The specially designed Flame Tamers distribute heat evenly by manipulating the flame output from side-to-side and front-to-back.

Our Bar Burners use a Graduated Output System, with larger ports in the front and smaller ones towards the back. This keeps the temperature consistent by forcing more heat towards the front of the grill to match the heat at the back of the grill.

Inside the Bar Burners lies a Proprietary Baffle System that allows for greater gas flow control and balances the heat output along the entire grilling surface.

THE CORE SERIES

# BUILDING YOUR IDEAL OUTDOOR KITCHEN IS EASY!

OUR CORE SERIES SHIPS  
IN HALF THE TIME!



**CORE SERIES**



# GET ONE OF OUR MOST POPULAR OUTDOOR KITCHENS IN YOUR BACKYARD FASTER WITH THE CORE SERIES

THIS IS OUR CORE PROGRAM, AND IT IS OUR NEW SALES PROGRAM WITH OUR MOST POPULAR KITCHENS AND OUR MOST POPULAR GRILLS.

THE CORE SERIES OFFERS CHOICE, VALUE AND FAST DELIVERY IN THREE EASY STEPS!

You simply need to choose your layout, choose your color, choose your counter and base material, and then decide if you want any equipment upgrades.

**1** CHOOSE YOUR KITCHEN

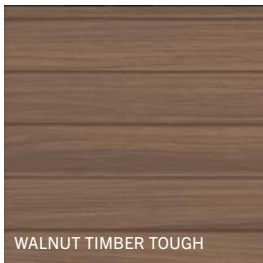
**2** CHOOSE YOUR TOP AND BASE

**3** CHOOSE YOUR UPGRADES

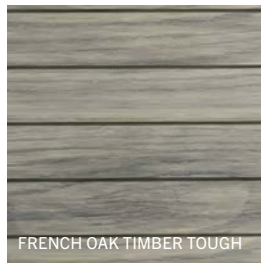


**CORE SERIES**

## BASE OPTIONS



WALNUT TIMBER TOUGH



FRENCH OAK TIMBER TOUGH



CHARCOAL TIMBER TOUGH



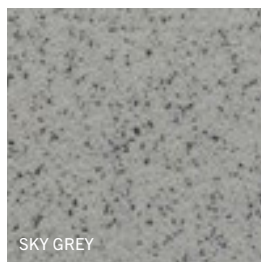
HONEY WHEAT SANDSTONE



ARCTIC GREY



BARNWOOD BROWN



SKY GREY



GRAPHITE GREY

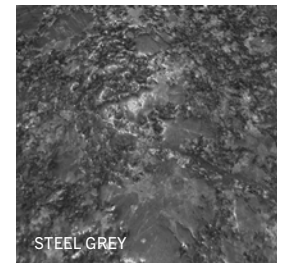


OSTRICH GREY LEDGER STONE

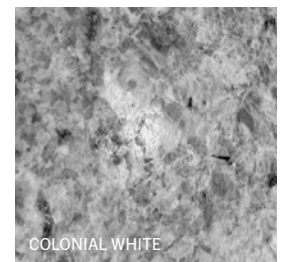


WHITE LEDGER STONE

## COUNTER OPTIONS



STEEL GREY



COLONIAL WHITE



### Standard Features

- Lonestar Grill Head 4 Burner 60,000 BTUs
- Single Side Burner
- Contemporary Fridge
- Door Drawer Combo
- Timber Tough Base - Choice of 2 Colors
- Leathered Granite Countertop - Choice of 2 Colors
- GFI

### Optional Upgrades/Downgrades

- Downgrade to Quartzite Base
- Upgrade to Premium Fridge
- Granite Backsplash
- Outlaw, Angus Grill
- Triple Drawer Combo or Propane Drawer Combo, Double Door
- Bottle Opener, Searing Burner, Removable Griddle, Grill Cover



### Standard Features

- Angus Grill Head 4 Burner 75,000 BTUs
- Premium Sink with Faucet
- Single Vertical Door
- Contemporary Fridge
- Triple Door Drawer Combo
- Timber Tough Base - Choice of 2 Colors
- Leathered Granite Countertop - Choice of 2 Colors
- GFI

### Optional Upgrades/Downgrades

- Downgrade to Quartzite Base
- Upgrade to Premium Fridge
- Granite Backsplash
- Downgrade to Lonestar or Outlaw
- Upgrade Sink to Trash Drawer & Single Side Burner
- Double Door, Door Drawer Combo, Propane Door Combo, Downgrade
- Bottle Opener, Searing Burner, Removable Griddle, Grill Cover



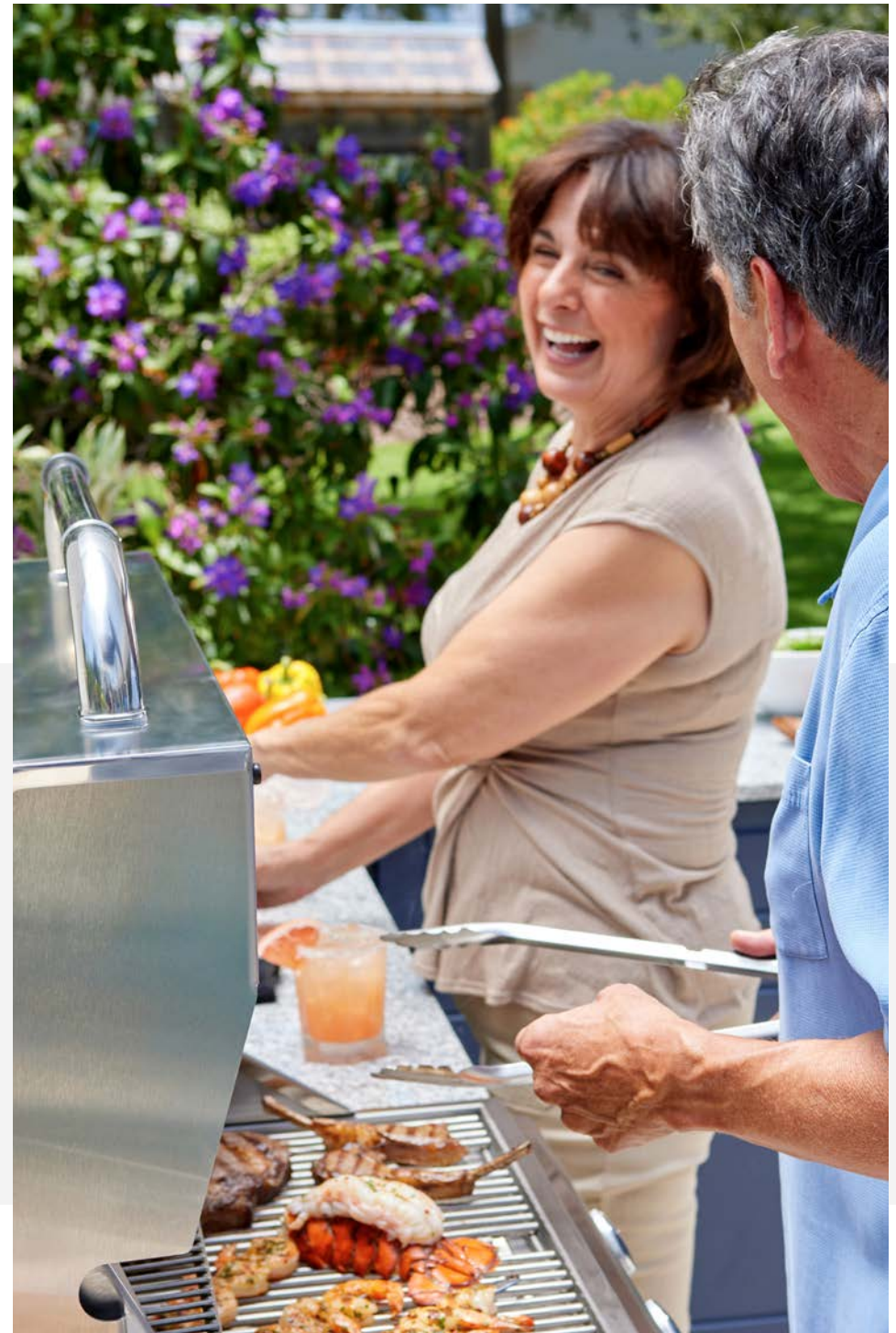
**POWER Q**

### Standard Features

- Outlaw Grill Head 4 Burner 60,000 BTUs
- Single Side Burner
- Contemporary Fridge
- Double Door
- Quartzsite Base - Choice of 2 Colors
- Leathered Granite Countertop - Choice of 2 Colors
- GFI

### Optional Upgrades/Downgrades

- Rock Base or Timber Tough Base (3 rock & 2 Timber Tough Options)
- Granite Backsplash
- Lonestar, Angus Grill
- Door Drawer Combo, Triple Drawer Combo, Propane Drawer Combo
- Bottle Opener, Searing Burner, Removable Griddle, Grill Cover



# INTRODUCING THE INCREDIBLE FEATURES THAT MAKE THESE OUR FLAGSHIP GRILLS!

- Quality Professional Grade Grills
- Rotisserie & Rotisserie Infrared Burner available
- Piezo Igniters - every valve, Simple System that lasts
- Heavy Duty Thermometer
- Lifetime Warranties\* on Fire Boxes, Grates & Cast Stainless Steel Burners
- Up to 105,000 BTUs - 15,000 per burner, 15,000 BTU Infrared Back Burner
- 304 - 14 Gauge Stainless Steel Construction with Single Piece Hood
- Value & Quality - Pay less than all other premium grills



Stainless Steel -  
Dual-Lined Hood

Twin Lighting  
System

Cast - Stainless Steel  
Bar Burners - Featuring  
ReliaBull™ Even-Heat  
Technology

LED Light Switch,  
Piezo Igniters, Zinc  
Knobs every valve

Single Piece  
Dual Lined  
Hood

Piezo Igniters/  
Zinc Control  
Knobs

Solid Stainless  
Steel Grates

Heavy Duty  
Thermometer

304 -14 Gauge  
Stainless Steel  
Single Piece  
Hood

ReliaBull Flame  
Tamers - Even Heat  
Technology

304 Stainless  
Steel Grates



Standard Features	BISON SPECIALTY GRILL	COMMERCIAL GRIDDLE™ SPECIALTY GRILL	OUTLAW INTRO GRILL	STEER PREMIUM GRILL	LONESTAR PREMIUM GRILL	ANGUS FLAGSHIP GRILL	BRAHMA FLAGSHIP GRILL	DIABLO FLAGSHIP GRILL
Cooking Power – BTUs	Charcoal	60,000	60,000	45,000	60,000	75,000	90,000	105,000
Burners	NA	4 - Welded Stainless Steel Bar Burners	4 - Welded Stainless Steel Bar Burners	3 - Welded Stainless Steel Bar Burners	4 - Welded Stainless Steel Bar Burners	4 - Cast Stainless Steel Bar Burners	5 - Cast Stainless Steel Bar Burners	6 - Cast Stainless Steel Bar Burners
Infrared Back Burner						•	•	•
Single Piece Dual Lined Hood	•	•	•	•	•	•	•	•
Piezo Igniter		•	•	•	•	•	•	•
Zinc Knobs		•	•	•	•	•	•	•
Red LED Light Indicator on Knobs						•	•	•
Solid Stainless Steel Grates	•	•	•	•	•	•	•	•
Heavy Duty Thermometer	•	•	•	•	•	•	•	•
Twin Lighting System					•	•	•	•
CSA Certified		•	•	•	•	•	•	•
Warming Rack - Sq. In.	210	NA	210	160	210	210	266	322
Cooking Surface - Sq. In.	810	810	810	556	810	810	1,026	1,242
Warranty	Lifetime Warranty on Grates, 5 Years Firebox	Lifetime Warranty on Grates & Firebox, 5 Years Burners	Lifetime Warranty on Grates & Firebox, 3 Years Burners	Lifetime Warranty on Grates & Firebox, 5 Years Burners	Lifetime Warranty on Grates & Firebox, 5 Years Burners	Lifetime Warranty on Grates, Firebox & Burners	Lifetime Warranty on Grates, Firebox & Burners	Lifetime Warranty on Grates, Firebox & Burners
Width of Grill Head	Grill Size: 30"	Grill Size: 30"	Grill Size: 30"	Grill Size: 24"	Grill Size: 30"	Grill Size: 30"	Grill Size: 38"	Grill Size: 46"
Bull Item Number	88787	92008 - LP 92009 - NG	26038 - LP 26039 - NG	69008 - LP 69009 - NG	87048 - LP 87049 - NG	47628 - LP 47629 - NG	57568 - LP 57569 - NG	62648 - LP 62649 - NG



### LIMITED LIFETIME WARRANTY

Assures the product you are buying is of good quality and without manufacturing defects, for years of worry-free enjoyment.



### ADVANCED FEATURES

All Bull gas grills come complete with our proprietary ReliaBull Even-Heat Technology, single-piece dual-lined hoods, solid stainless steel cooking grates, and individual friction-based piezo igniters.

# MASTER THE ART OF PIZZA MAKING WITH THE BULL DUAL FUEL COUNTERTOP PIZZA OVEN, PERFECT FOR ASPIRING HOME CHEFS AND SEASONED PIZZAIOLOS.



- Dual Fuel LP Gas or Wood
- Removable Bluetooth Digital Thermometer
- Includes Pizza Peel/Launcher
- Two Food Temperature Probes
- Convenient Ash Clean Out Basket
- Versatile Temp Control for Baking and Roasting

**Note\*** Oven is designed to use with Gas or Wood separately, not together. Using the gas function in conjunction with wood will void any warranties.

This innovative oven, designed for versatility and consistent performance, caters to all your pizza cravings, from a classic margherita pizza to unique gourmet toppings. Experience the pizzeria in your kitchen with its state-of-the-art dual fuel system, ensuring mouthwatering results with every bake.

The Bull Dual Fuel Countertop Pizza Oven is more than just an appliance; it's your gateway to culinary creativity, allowing you to impress family and friends with delectable, artisanal pizzas. Elevate your home cooking experience and discover the joy of pizza perfection with Bull's exceptional countertop pizza oven.



# THE PERFECT END TO A GREAT DAY IS RELAXING ON YOUR PATIO AS THE COOL EVENING AIR CHILLS. ENJOY THE WARMTH AND ELEGANCE OF BULL FIRE FEATURES YEAR ROUND.

Our fire features deliver 15,000 to 60,000 BTUs of warmth (choose between propane or natural gas), and pre-fab construction allows for easy installation anywhere.

## HIGH PROFILE SLIM RECTANGLE FIRE PIT

Bull Outdoor Products' Fire Pits are second-to-none and have customizable bases and Lava River Rock for the ultimate backyard entertainer. The High-Profile Slim Rectangle Fire Pit is a great addition to any backyard or patio and can be placed in an ideal location with its semi-portable and slim design.



## SMALL SQUARE FIRE PIT

The Square Fire Pit is a pre-fabricated construction that can be placed anywhere in your backyard or patio. It is a versatile option for those looking for a fireplace or pit that can have guests gathered all around.



## BULL RECTANGLE FIRE PIT H-BURNER KIT

Introducing the Bull Rectangle Fire Pit H-Burner Kit, the quintessential choice for enhancing your custom-built gas fire pit. This comprehensive kit is meticulously designed to integrate seamlessly into rectangular fire pits, providing a sophisticated and robust flame that becomes the centerpiece of your outdoor gatherings.



## ROUND 10" FIRE RING KIT

Elevate your outdoor living experience with the Bull Round 10" Fire Ring Kit, expertly crafted to blend seamlessly into your custom-built gas fire pit. This premium kit is designed to offer not just warmth and ambiance but also reliability and ease of use, making it a perfect addition to your backyard, patio, or garden.

## SQUARE FIRE TABLE

The Fire Table incorporates a fire pit with counter space to provide seating for friends and family to enjoy the warmth with food and drinks. This table will become the center of your backyard entertainment and can be placed anywhere in your yard or patio.





**DEDICATED TO DEVELOPING  
THE BEST AND MOST COMPLETE  
LINE OF OUTDOOR KITCHEN  
EQUIPMENT IN THE INDUSTRY.**

# COMPONENTS BUILT FOR YOUR SPECIFIC NEEDS

Customizing your Bull Outdoor Kitchen is easy with more than 50 component upgrades.



**DOOR/PROPANE DRAWER COMBO**  
Stainless Steel  
(Cutout - 31 1/8" W x 19 5/8" H x 16 9/16" D)  
ITEM# 65790



**DOOR/DRAWER COMBO 30"** Stainless Steel  
(Cutout - 31" W x 19 5/8" H x 20 1/2" D)  
ITEM# 25890

**DOOR/DRAWER COMBO 38"** Stainless Steel  
(Cutout - 38 5/8" W x 19 5/8" H x 20 1/2" D)  
ITEM# 55890



**DOOR/TRIPLE DRAWER COMBO 30"**  
Stainless Steel  
(Cutout - 31" W x 19 5/8" H x 20 1/2" D)  
ITEM# 25900



**DOUBLE TRASH/RECYCLING DRAWER**  
Stainless Steel  
(Cutout - 18 1/2" W x 24 5/8" H x 23" D)  
DOUBLE CAN - ITEM# 56950

**SLIM TRASH DRAWER** Stainless Steel  
(Cutout - 14 5/16" W x 24 5/8" H x 19 3/8" D)  
SINGLE CAN - ITEM# 56960



**PREMIUM GLASS DOOR REFRIGERATOR 4.9 cu. ft.**  
Stainless Steel - Outdoor Rated  
(Cutout - 24 3/8" W x 33 1/4" H x 24 1/4" D)  
ITEM# 13100



**PREMIUM REFRIGERATOR 4.9 cu. ft.**  
Stainless Steel - Outdoor Rated  
(Cutout - 24 3/8" W x 33 1/4" H x 24 1/4" D)  
ITEM# 13700



**SINGLE DRAWER** Stainless Steel  
(Cutout - 23 5/8" W x 4 1/8" H x 20 5/16" D)  
ITEM# 19970



**DOUBLE DRAWER** Stainless Steel  
(Cutout - 12 7/8" W x 19 3/4" H x 20 7/16" D)  
ITEM# 56990



**LARGE SINGLE DRAWER** Stainless Steel  
(Cutout - 24 7/8" W x 10 1/4" H x 23 1/2" D)  
ITEM# 19980



**TRIPLE DRAWER SYSTEM** Stainless Steel  
(Cutout - 18 1/2" W x 24 5/8" H x 15 3/4" D)  
ITEM# 58120



**SINGLE SLIDE-IN PRO SIDE BURNER**  
Stainless Steel  
(Cutout - 12 3/16" W x 9 1/2" H x 12" D)  
ITEM# 60018 (LP) - ITEM# 60019 (NG)



**SINGLE SIDE BURNER** Stainless Steel  
(Cutout - 11 1/4" W x 3 1/4" H x 17 1/2" D)  
ITEM# 60008 (LP) - ITEM# 60009 (NG)



**WARMING DRAWER** Stainless Steel  
(Cutout - 28 3/4" W x 10 1/8" H x 20 15/16" D)  
ITEM# 85747



**PROPANE DRAWER** Stainless Steel  
(Cutout - 14 5/8" W x 19 3/4" H x 16 1/8" D)  
ITEM# 56830



**SINGLE HORIZONTAL DOOR** Stainless Steel  
(Cutout - 23 1/8" W x 15 3/4" H x 2" D)  
ITEM# 89990



**XL VERTICAL DOOR** Stainless Steel  
(Cutout - 21" W x 32 1/2" H x 2" D)  
ITEM# 89998



**30" BAR CENTER** Stainless Steel  
(Cutout - 29" W x 9 3/4" H x 22 3/4" D)  
ITEM# 97623



**18" SINK & FAUCET** Stainless Steel  
(Cutout - 16 1/32" W x 14 1/32" H) \*under-mount  
(Cutout - 17 23/32" W x 14 1/32" H) \*top-mount  
DUAL MOUNT ITEM# 12515



**VERTICAL DOOR** Stainless Steel  
(Cutout - 15 3/4" W x 19 5/8" H x 2" D)  
RIGHT SWING - ITEM# 89995  
LEFT SWING - ITEM# 98560



**DOUBLE DOOR 25"** Stainless Steel  
(Cutout - 25 1/2" W x 19 5/8" H x 2" D)  
ITEM# 33590

**DOUBLE DOOR 30"** Stainless Steel  
(Cutout - 31" W x 19 5/8" H x 2" D)  
ITEM# 33580

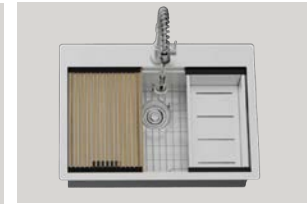
**DOUBLE DOOR 38"** Stainless Steel  
(Cutout - 38 1/2" W x 19 9/16" H x 2" D)  
ITEM# 34020



**VENTED DOUBLE DOOR 30"** Stainless Steel  
(Cutout - 31" W x 19 5/8" H x 2" D)  
ITEM# 45580



**VENTED VERTICAL DOOR** Stainless Steel  
(Cutout - 15 3/4" W x 19 5/8" H x 2" D)  
ITEM# 90000



**30" SINK & FAUCET** Stainless Steel  
(Cutout - see manual for specs)  
DUAL MOUNT ITEM# 12535



**ICE CHEST** Stainless Steel  
(Cutout - 13 3/4" W x 15 1/2" H x 20 1/2" D)  
ITEM# 00002



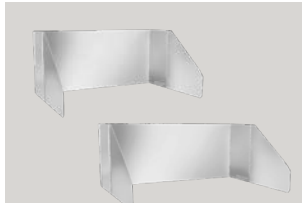
**CONTEMPORARY REFRIGERATOR** 4.5 cu. ft.  
Stainless Steel  
(Cutout - 20 3/4" W x 33 1/4" H x 21 1/4" D)  
ITEM# 11520



**PRO ICE MAKER**  
Stainless Steel - Outdoor Rated  
(Cutout - 15 1/2" W x 34 1/4" H x 23" D)  
ITEM# 13200



**VENT HOOD - TWIN FAN** Stainless Steel  
(36" W x 25" H) ITEM# 66009 - 30" GRILLS  
(42" W x 25" H) ITEM# 66098 - 38" GRILLS



**WINDSHIELDS** Stainless Steel  
ITEM# 24402 - 24" GRILLS  
ITEM# 24403 - 30" GRILLS  
ITEM# 24404 - 38" GRILLS  
ITEM# 24405 - 46" GRILLS



**DOUBLE SLIDE-IN SIDE BURNER W/COVER**  
Stainless Steel  
(Cutout - 12 3/16" W x 9 1/2" H x 20 5/8" D)  
ITEM# 30008 (LP) - ITEM# 30009 (NG)



**POWER BURNER - W/COVER** Stainless Steel  
(Cutout - 21" W x 9 1/2" H x 21" D)  
ITEM# 96000 (LP) - ITEM# 96001 (NG)



**BULL KEGERATOR** 6.6 cu. ft.  
Stainless Steel - Outdoor Rated  
(Cutout - 24 1/2" W x 35" H x 25 3/4" D)  
ITEM# 17900 - DOUBLE TAP ITEM# 17950



**GRILL FINISHING FRAME** Stainless Steel  
30" ITEM# 49330 - 38" ITEM# 58730  
\*All Finishing Frames & specs available online



**15" SINK & FAUCET** Stainless Steel  
(Cutout - see manual for specs)  
DUAL MOUNT ITEM# 12516



**24" SINK & FAUCET** Stainless Steel  
(Cutout - see manual for specs)  
DUAL MOUNT ITEM# 12530



**GRILL HEAD COVERS**  
24" Item# 72016 30" ITEM# 45005  
38" Item# 56006 46" ITEM# 72017  
Bison Head Premium Cover ITEM# 72018



**GRILL CART COVERS**  
7 Burner Premium Grill Cart Cover ITEM# 72014  
24" ITEM# 69105 30" ITEM# 72012  
38" ITEM# 72013



**INSULATED GRILL JACKET - 30"**  
(Cutout - 37 7/8" W x 10" H x 22" D)  
ITEM# 47800

**INSULATED GRILL JACKET - 38"**  
(Cutout - 45 3/8" W x 10" H x 22" D)  
ITEM# 47900



**BULL POWER WARM 48" 5000-WATT INFRARED DUAL MOUNT OUTDOOR HEATER** Stainless Steel  
ITEM# 26200



**GRIDDLE CART COVER**  
30" Griddle Cart Cover  
ITEM# 72020



**GRIDDLE COVER**  
30" Griddle Head Cover  
ITEM# 72019



**BOTTLE OPENER & CATCH** Stainless Steel  
(Cutout - 6" W x 10" H)  
ITEM# 66006

**BULL'S LINEUP OF COMPONENTS INCLUDES A PATENTED WARMING DRAWER, SOFT-CLOSE DRAWERS, DUAL-LINED DOORS, ICE CHEST, BAR CENTER AND A BUILT-IN REFRIGERATOR THAT WILL KEEP YOUR FOOD AND DRINKS AT THE PERFECT TEMPERATURE.**



**BULL**   
COMPLETE OUTDOOR KITCHEN & GRILL SOLUTIONS

Visit [BullBBQ.com](http://BullBBQ.com) or contact us at  
(800) 521-2855. The Brand Choice  
for Commercial and Professional BBQs.

©2026 Bull Outdoor Products, Inc.®  
All Rights Reserved.

Visit us online

